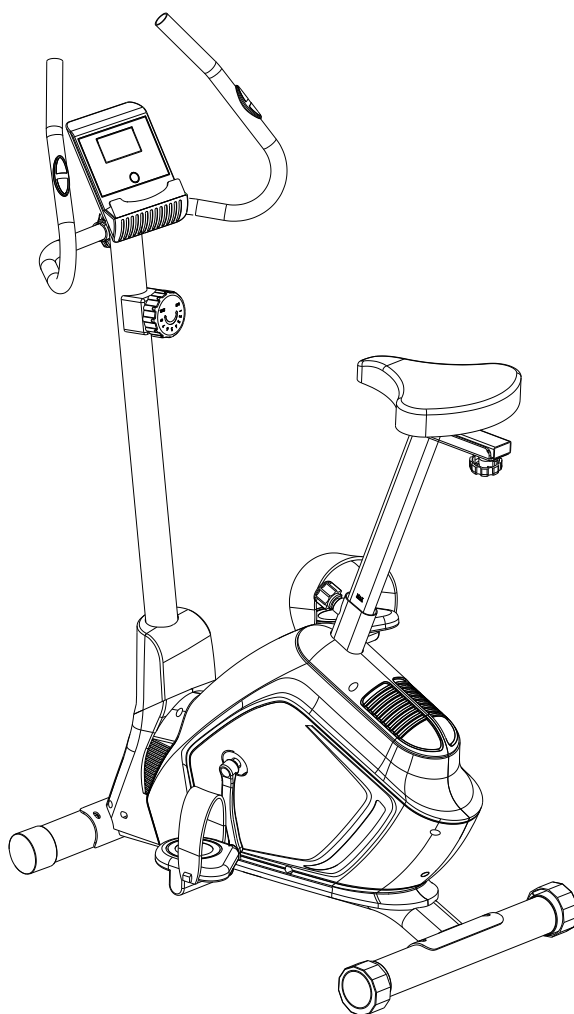


# EDGEFIT

## OWNER'S MANUAL

ITEM # EDG6000 - UB200 UPRIGHT BIKE



***THANK YOU FOR PURCHASING THE UB200 Upright Bike FROM EDGEFIT***

### CONTENTS:

- |                                   |              |
|-----------------------------------|--------------|
| - Important safety information    | page 2       |
| - Exploded drawing and parts list | page 3 – 5   |
| - Assembly                        | page 6 – 9   |
| - Console instructions            | page 10 – 11 |
| - Customer support                | page 12      |

**Please read this instruction manual carefully before assembling.**

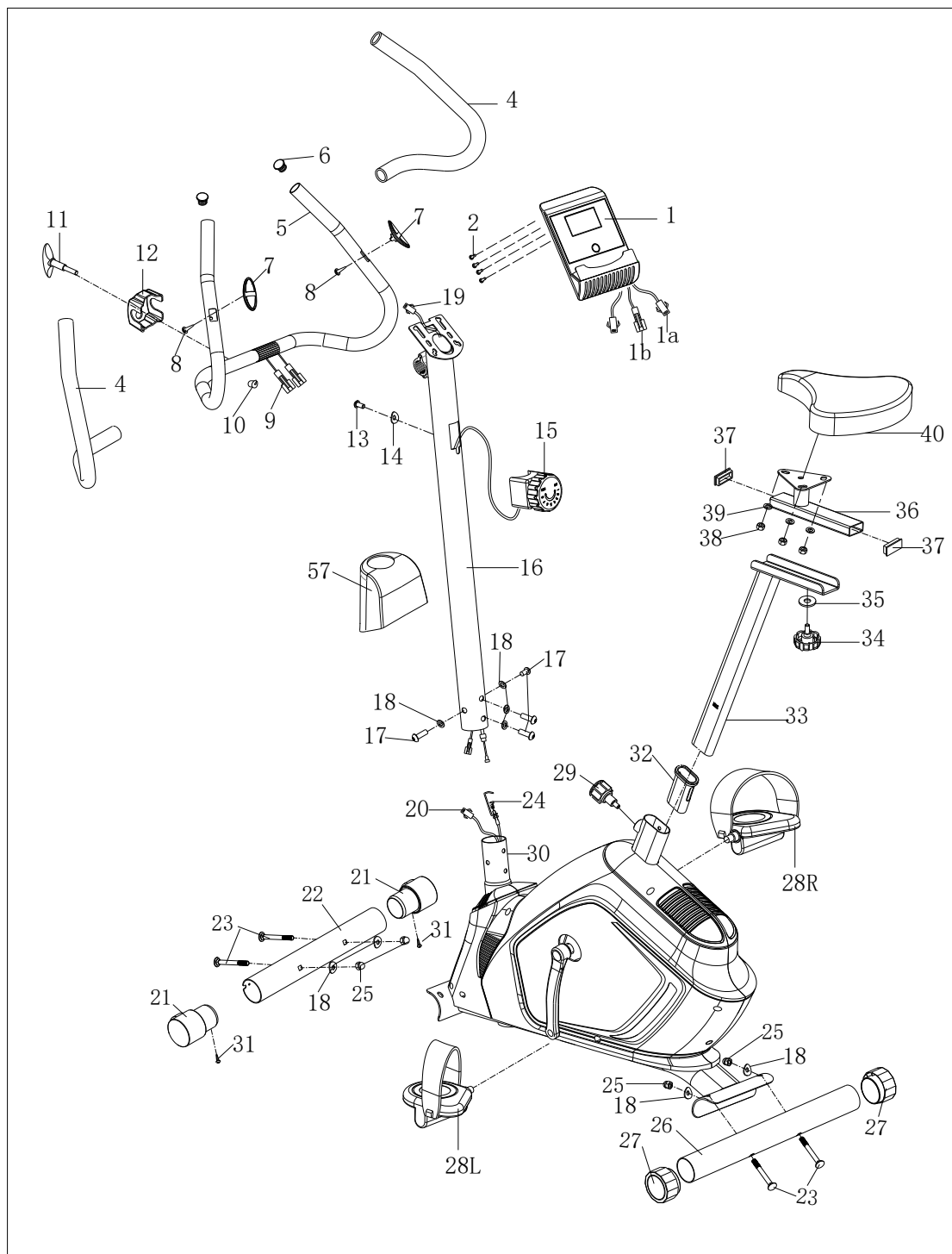
## **SAFETY INFORMATION:**

Note the following precaution before assembling or operating the machine:

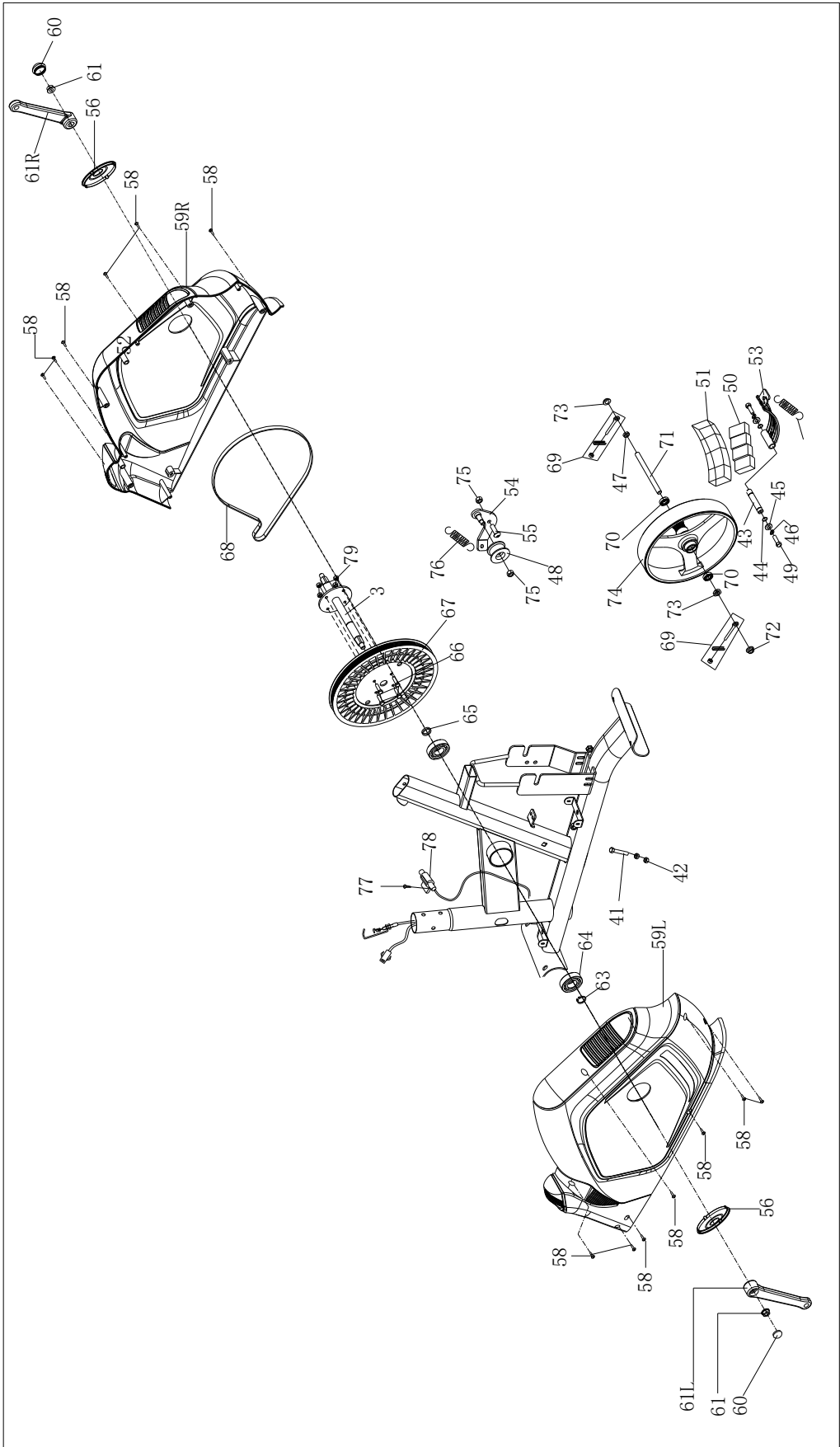
- 1、 Assemble the machine exactly as described in this instruction manual.
- 2、 Check all the screws, nuts, and other connections before using the machine for the first time and ensure that the bike is in safe working condition before every use.
- 3、 Set up the bike in a clean dry level place and keep it away from moisture and water.
- 4、 Always ensure that the bike is stable and has adequate space around it before use.
- 5、 Do not use aggressive cleaning products to clean this bike.
- 6、 Always consult your doctor before undertaking any exercise program.
- 7、 This machine is not suitable for therapeutic purposes.
- 8、 This machine can only be used by one person at a time.
- 9、 Always wear suitable training clothes and shoes when using this bike.
- 10、 If you have a feeling of dizziness, sickness or other abnormal symptoms or pain, please stop training immediately and consult a doctor.
- 11、 This bike is under no circumstances suitable as a children's toy. This bike is not intended for use by persons (including children) with reduced physical, sensory, or mental capabilities, or lack of experience and knowledge, unless they have been giving supervision or instruction concerning use of this bike by a person responsible for their safety.
- 12、 Care must be taken when lifting or moving the equipment so as not to injure your back.  
Always use proper lifting techniques and/or use assistance.
- 13、 Use only original spare parts for any necessary repairs.
- 14、 Maximum user weight – 110KGS

# EXPLODED-VIEW & PARTS LIST:

## EXTERNAL VIEW:



INTERNAL VIEW:



NO	Description	QTY.
1	Computer	1
2	Screw M5*10	4
3	Middle axle	1
4	Foam	2
5	Handlebar	1
6	End cap Φ25	2
7	Pulse Φ25	2
8	Screw ST4.2*19	2
9	Handle pulse wire	2
10	Grip φ12	1
11	Knob M8	1
12	Small cover	1
13	Screw M5*25	1
14	Arc washer d6*Φ20*R25*1.5	1
15	Tension control	1
16	Support tube	1
17	Bolt M8*16	4
18	Arc washer d8*Φ20*1.5*R30	8
19	Middle wire	1
20	Sensor wire	1
21	End cap Φ60	2
22	Front stabilizer	1
23	Carriage bolt M8*72	4
24	Tension wire	1
25	Domed nut M8	4
26	Rear stabilizer	1
27	End cap Φ60	2
28L/R	Pedal	2
29	Knob M16*1.5*Φ37	1
30	Main frame	1
31	Screw ST3.0*10	2
32	Bushing	1
33	Seat tube	1
34	Bolt	1
35	Washer d8*Φ20*2	1
36	Sliding tube	1
37	End cap J40*20	2
38	Nylon nut M8	3
39	Washer d8*Φ16*1.5	3
40	Seat	1
41	Hexagon bolt M6*30	1

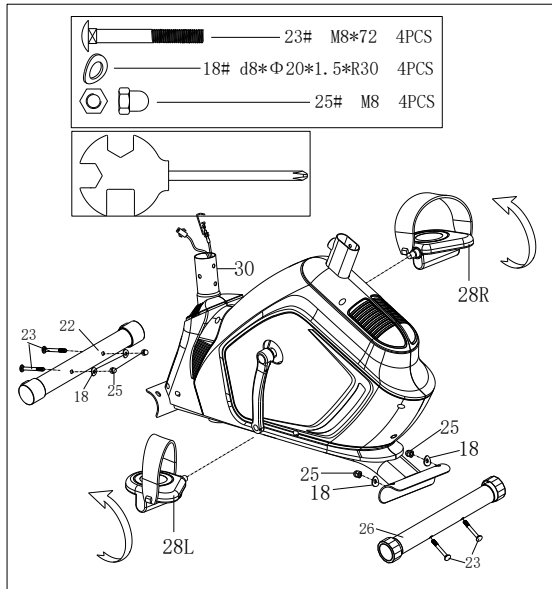
NO	Description	QTY
42	Hexagon nut M6	2
43	Axle of Magnetic board	1
44	Snap spring d12	2
45	Washer d6*Φ16*1.5*	2
46	Spring washer d6	2
47	Hexagon thin nut M10*1.0	1
48	Pinch roller	1
49	Hexagon bolt M6*20	2
50	Magnet	4
51	Plastic lattice	1
52	Tension spring	1
53	Magnetic board	1
54	Belt bracket	1
55	Screw M8*19	1
56	Crank cover	2
57	Front cover	1
58	Screw ST4.2*16	13
59L/R	Chain cover	2
60	End cap	2
61	Nut M10*1.25	2
62L/R	Crank	1
63	Bearing	2
64	Main frame	1
65	Spacer bush	1
66	Bolt M6*15	4
67	Belt pulley	1
68	Belt	1
69	Bolt group	2
70	Bearing	2
71	Axle	1
72	Hexagon flange nut M10*1.0	1
73	Hexagon thin nut M10*1.0	1
74	Flywheel	1
75	Nylon nut M8	1
76	Tension spring	1
77	Screw ST4.2*16	1
78	Sensor socket	1
79	Nylon nut M6	4
	Open-end wrench S13-14-15	1
	Allen wrench S6	1

# ASSEMBLY INSTRUCTION:

## 1. PREPARATION:

- A. Before assembling make sure that you will have enough clear space around the bike.
- B. Use the tools provided for assembling.
- C. Before assembling please check whether all the necessary parts are available.

## 2. ASSEMBLY INSTRUCTION:



### Step 1:

Attach the front stabilizer (22) and the rear stabilizer (26) to the main frame (30) with carriage bolt (23), washers (18) and domed nut (25).

Attach the pedal to the crank arms as shown in FIG.1,

**CAUTION:** be sure the right pedal (28R) marked (R) is attached to the right crank arm and tightened in the clockwise direction.

The left pedal (28L) marked (L) is attached to the left crank arm and is tightened in an anti-clockwise direction.

### IMPORTANT PEDAL ASSEMBLY INSTRUCTIONS:

It is very important you assemble the Left / Right Pedals to the correct side of this Bike.

**They are not interchangeable.**

***\*Please note - the left and right pedals are marked with L & R as per images below\****

### Left Pedal Assembly:

The Left Pedal has a left-hand thread and is to be tightened in an anti-clockwise direction when standing on the left side of the bike. Please make sure the pedal is as tight as possible otherwise the pedal can make a knocking sound.

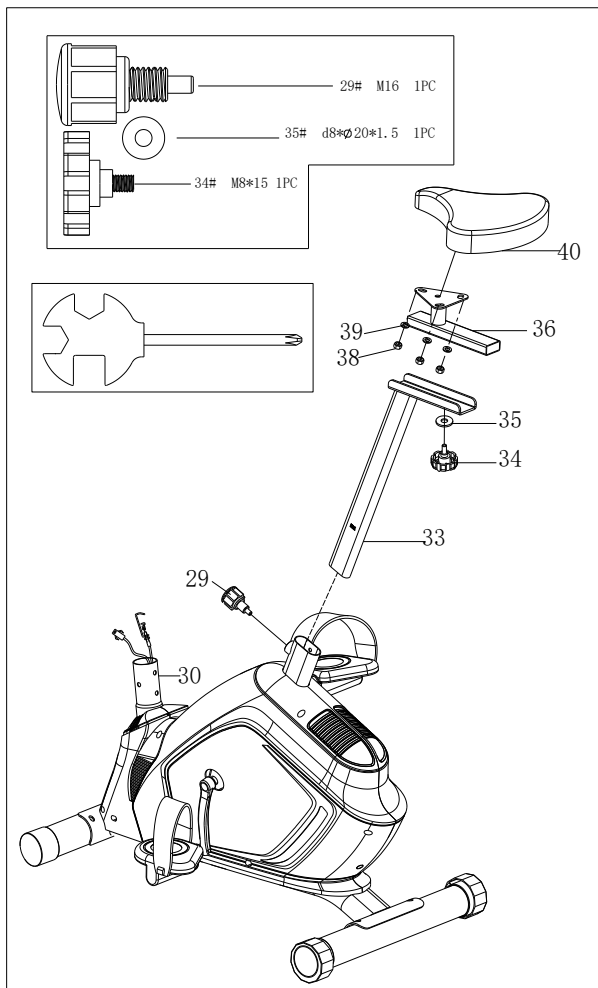
### Right Pedal Assembly:

The Right Pedal has a right-hand thread and is to be tightened in a clockwise direction when standing on the right side of the bike. Please make sure the pedal is as tight as possible otherwise the pedal can make a knocking sound.

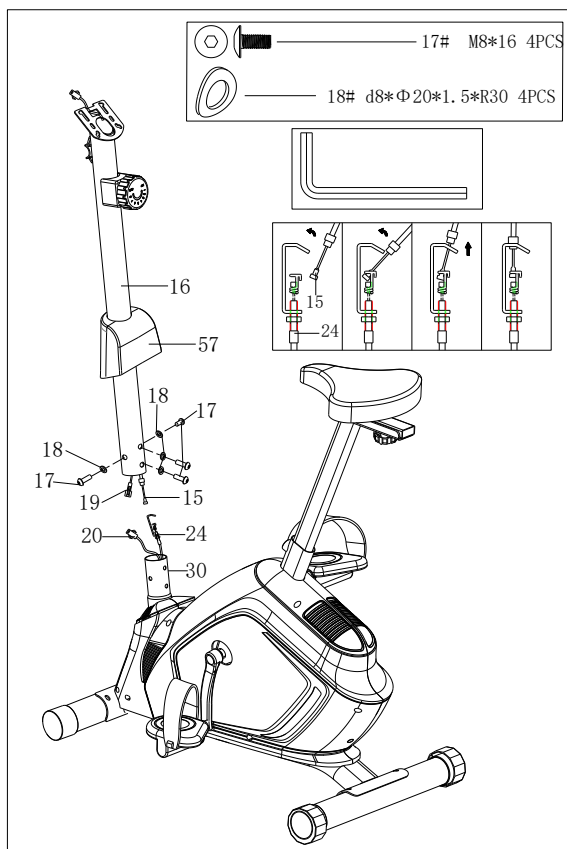


Left Pedal marked L – Right Pedal marked R



**Step 2:**

- Attach the seat (40) to the seat bracket (36) with washers (39) and nylon nuts (38).
- Slide sliding tube (33) into main frame (30), secure and tighten with knob (29).
- Attach sliding tube (36) onto seat tube (33) with washer (35) and bolt (34).

**Step 3:**

Slide the front plastic cover (57) onto the support tube (16), then connect the sensor wire (20) with sensor wire (19) and attach the tension control wire (24) with tension control wire (15).

**Please see colour images and video link for Tension control wire assembly on page 7 if you are experiencing any difficulties.**

Install the support tube (16) on the main frame (30) with bolts (17), and washer (18).

**Be very careful** not to cut the wires 20 & 19 when sliding the support tube (15) onto the main frame (48)

**Step 3 continued:**

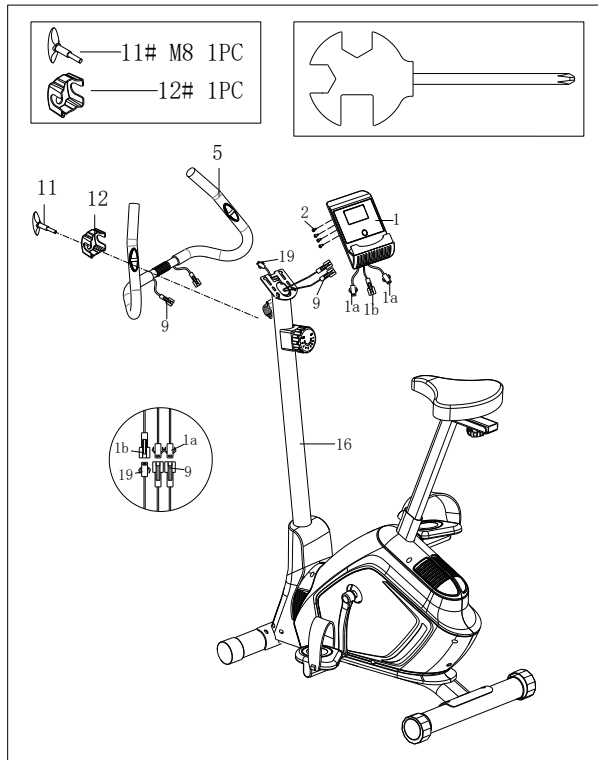


Please watch video demonstration of tension control wire assemble – link is below.

Link: <https://youtu.be/VBTzzeedPdg>

Please make sure the resistance control knob (15) is set to level 1 while trying to assemble.



**Step 4:**

- a. Fix handlebars (5) to supports tube (16) using plastic cover (12) and handlebar adjusting knob (11).
- b. Connect pulse wires (9) to computer wire (1a).
- c. Connect the middle wire (19) to the computer wire (1b)
- d. Attach computer (1) to support tube (16) using screws (2)

**Be careful not to jam any wires between computer and support tube.**

**PLEASE NOTE:**

THERE IS TWO MOVING WHEELS ON THE FRONT STABILIZER (22) FOR RELOCATING YOUR BIKE AND THE REAR STABILIZER (26) HAS ADJUSTABLE END CAPS FOR UNEVEN FLOORS.  
**SIMPLY TURN THE ENDS OF EACH SIDE OF THE REAR STABILIZER TO ADJUST**

**Assembled! Please double-check each bolt/nut/screw is tight!**

# CONSOLE INSTRUCTION:

## **I. Mode:**

This key allows you to select and lock onto a particular function you want to view.

To choose SCAN or LOCK if you do not want the scan mode, press the MODE key when the pointer on the function you want which begins blinking.

## **II. Auto ON/OFF:**

When the batteries (2 x AA) are installed, the computer will beep and show the full display for one second and then go to Standby mode.

**TURNS ON:** The system turns on when any key is pressed or when it receives an input signal from the speed sensor (when you start to use your new bike)

**TURNS OFF:** The system turns off automatically when the sensor has no input signal from the speed sensor, or no keys are pressed for approx. 3minutes.

## **III. RESET:**

The unit can be reset by either changing the battery or pressing the mode key for 3 seconds.

## **IV. Button function:**

Order of appearance when MODE button is pressed: TIME-SPEED-DISTANCE-CALORIE-PULSE

<b>TIME</b>	Press the MODE key until the pointer locks on to TIME. The total working time will be shown when starting exercise.
<b>SPEED</b>	Press the MODE key until the pointer locks on to SPEED. Displays current speed during workout time.
<b>DISTANCE</b>	Press the MODE key until the pointer locks on to DISTANCE. The distance of each workout will be displayed when starting exercise.
<b>ODOMETER</b>	Press the MODE key until the pointer advances to ODO METER. The total accumulated distance will be shown.
<b>CALORIE</b>	Press the MODE key until the pointer locks onto CALORIE. The calorie burned will be displayed when starting exercise.
<b>PULSE</b>	Press the MODE key until the pointer advances to PULSE function and take hold of the hand sensors about 3 seconds for function to register.
<b>SCAN</b>	Display changes according to the next diagram every 4 seconds.

## **NOTE:**

1. Without any signal coming in 4-5 minutes, the LCD display will be shut off automatically.
2. If there is a possibility of seeing an improper display on the monitor, please replace the batteries to have a good result. You must replace all the batteries at the same time.
3. The monitor uses 1.5V "AA" or "AAA" batteries.

## SPECIFICATIONS:

<b>Speed KM/H:</b>	Range: 0.0~99.9 KM/H
<b>TIME:</b>	Range: 0:00~99.59 Mins
<b>DISTANCE:</b>	Range: 0.0~999.9 KM
<b>CALORIE:</b>	Range: 0.0~9999 Calorie
<b>PULSE:</b>	Range: 40~240BPM (beat per minute)
<b>ODOMETER:</b>	Range: 0~9999 KM

## CUSTOMER SUPPORT:

Should you require any customer support, warranty requests or spare parts, please provide the following information via email to [support@edgefit.com.au](mailto:support@edgefit.com.au) or 0494 022 729.

- Serial number – this can be found on the rear foot stabilizer as per image below.
- The original proof of purchase from one of our retail partners.
- Description of the issue or spare part # required from the exploded diagram on page 3, 4, 5.

It's very important to retain your proof of purchase receipt as the warranty is only applicable to the original purchaser of this product. The warranty starts from the date shown on the original receipt of purchase from one of our retail partners.

EDGEFIT warranty covers manufacturing faults.

### UB200 WARRANTY:

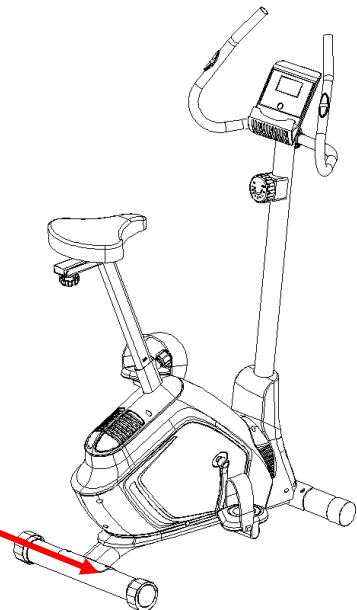
**7 years Frame**

**2 Years Parts**

**2 Years Electronics**



Serial Number is located here.



**Proudly designed and developed by:**

Total Import Solutions PTY LTD  
PO Box 92 Bargo, NSW, Australia.  
ABN 17 633 635 702

**EDGEFIT**