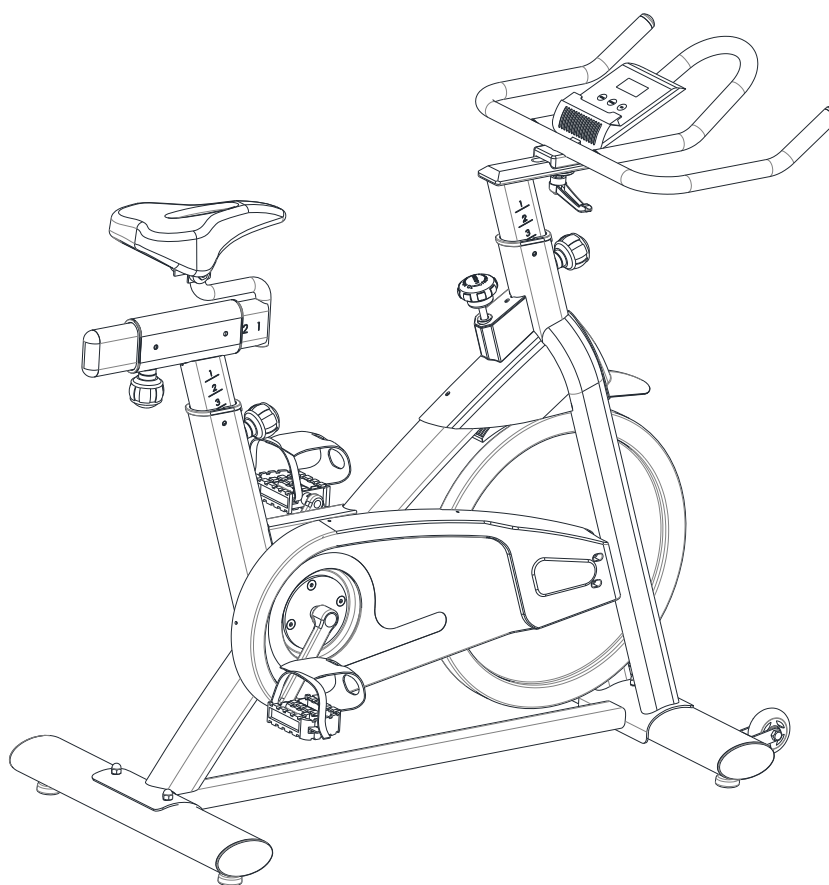


EDGEFIT

OWNER'S MANUAL

ITEM # EDG6007 - STUDIOPro BIKE



THANK YOU FOR PURCHASING THE STUDIOPro Upright Bike FROM EDGEFIT

CONTENTS:

- | | |
|-----------------------------------|--------------|
| - Important safety information | page 2 |
| - Exploded drawing and parts list | page 3 – 5 |
| - Assembly | page 6 – 9 |
| - Resistance adjustment | page 9 |
| - Console instructions | page 10 – 11 |
| - APP Connection | page 12 – 23 |
| - Customer support | page 24 |

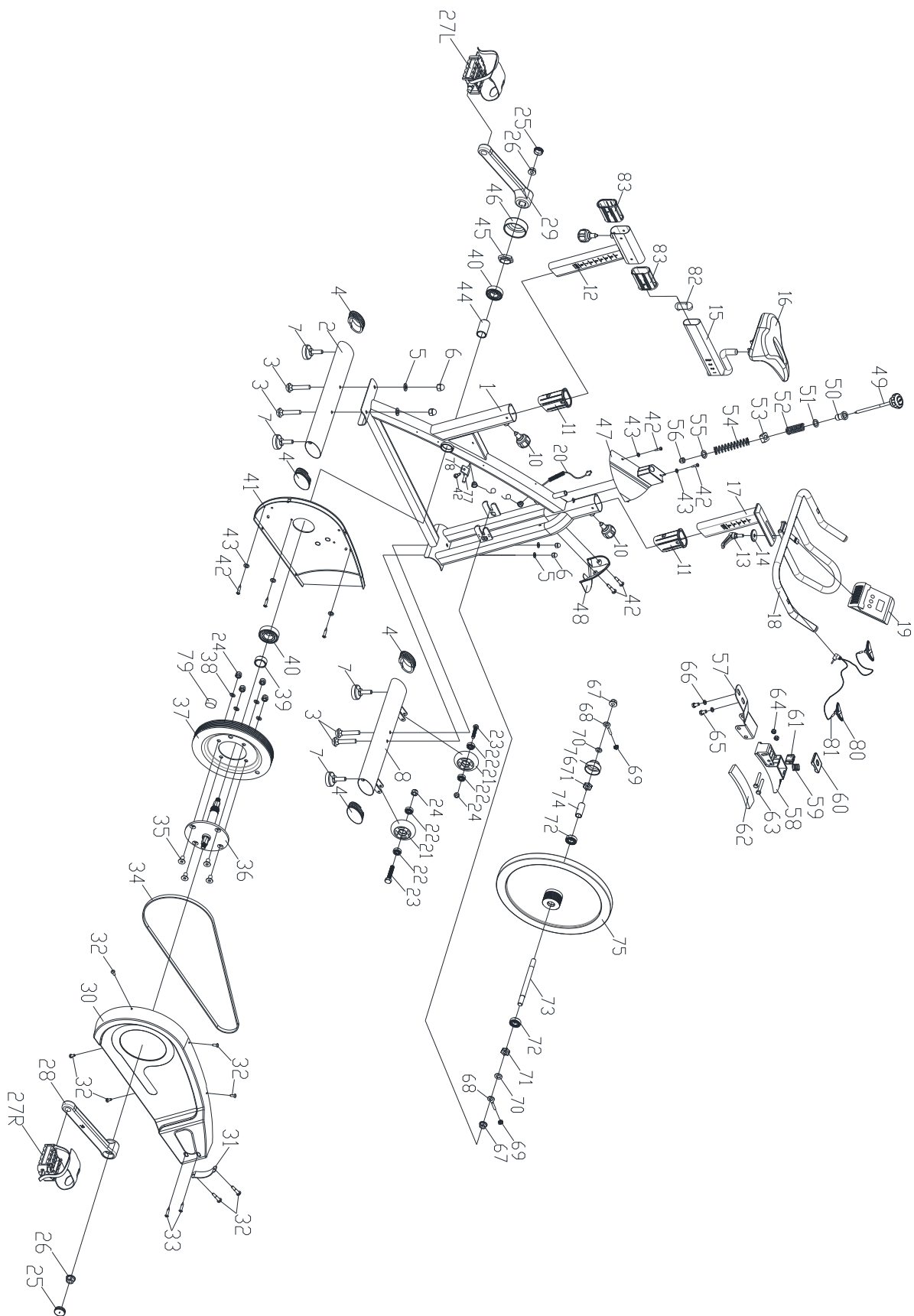
Please read this instruction manual carefully before assembling.

SAFETY INFORMATION:

Note the following precaution before assembling or operating the machine:

- 1、 Assemble the machine exactly as described in this instruction manual.
- 2、 Check all the screws, nuts, and other connections before using the machine for the first time and ensure that the bike is in safe working condition before every use.
- 3、 Set up the bike in a clean dry level place and keep it away from moisture and water.
- 4、 Always ensure that the bike is stable and has adequate space around it before use.
- 5、 Do not use aggressive cleaning products to clean this bike.
- 6、 Always consult your doctor before undertaking any exercise program.
- 7、 This machine is not suitable for therapeutic purposes.
- 8、 This machine can only be used by one person at a time.
- 9、 Always wear suitable training clothes and shoes when using this bike.
- 10、 If you have a feeling of dizziness, sickness or other abnormal symptoms or pain, please stop training immediately and consult a doctor.
- 11、 This bike is under no circumstances suitable as a children's toy. This bike is not intended for use by persons (including children) with reduced physical, sensory, or mental capabilities, or lack of experience and knowledge, unless they have been giving supervision or instruction concerning use of this bike by a person responsible for their safety.
- 12、 Care must be taken when lifting or moving the equipment so as not to injure your back.
Always use proper lifting techniques and/or use assistance.
- 13、 Use only original spare parts for any necessary repairs.
- 14、 Maximum user weight – 150KGS

EXPLODED-VIEW & PARTS LIST:



NO.	NAME	QUANTITY	SPEC.
1	MAIN FRAME	1	WELDMENT
2	REAR STABILIZER	1	WELDMENT
3	CARRIAGE BOLT	4	GB/T 12-1988 M8*67
4	TUBE PLUG 1	4	99x54x28
5	ARC WASHER	4	φ8
6	DOMED NUT	4	GB/T 802-1988 M8
7	ADJUSTMENT FOOT	4	φ38*43/(M8X25)
8	FRONT STABILIZER	1	WELDMENT
9	PLASTIC PLUG 1	2	φ14*14
10	ADJUSTMENT KNOB 1	3	M16*1.5
11	PLASTIC SLEEVE 1	2	128.6*36.5*75.5
12	VERTICAL SEAT POST	1	WELDMENT
13	ADJUSTMENT KNOB 2	1	M10*25
14	FLAT WASHER 1	1	φ45*φ10.5*5
15	SEAT POST	1	WELDMENT
16	SEAT	1	DD-2681
17	HANDLEBAR POST	1	WELDMENT
18	HANDLEBAR	1	WELDMENT
19	COMPUTER	1	X-3574
20	SENSING LINE	1	L=1400
21	WHEEL	2	φ69X26
22	BEARING 1	4	608ZZ
23	BOLT 1	2	GB/T 5780-2000 M8*40
24	LOCK NUT 1	6	GB/T 889.1-2000 M8
25	CRANK PLUG	2	φ23*7.5
26	FIXING NUT 1	2	GB/T 6177.2-2000 M10*1.25
27	PEDAL	1 SET	JD-301 (9/16")
28	RIGHT CRANK	1	9/16"
29	LEFT CRANK	1	9/16"-LH
30	OUTER COVER	1	652*265*61.5
31	PLASTIC SHEET 1	1	90*22*2
32	SCREW 1	7	GB/T 845-1985 ST4.2*16
33	SCREW 2	2	GB/T 15856.1-2002 ST4.2X16
34	BELT	1	5PK1340mm (53in)
35	BOLT 2	4	GB/T 70.3-2000 M8*18
36	SPINDLE	1	φ20*158
37	PULLEY	1	φ200*24
38	ELASTIC WASHER 1	4	GB/T 859-1987 8
39	CASING PIPE 1	1	φ25*φ20.05*11.5
40	BEARING 2	2	6004ZZ
41	INNER COVER	1	406*258*17
42	SCREW 3	8	GB/T 15856.1-2002 ST4.2X19
43	FLAT WASHER 2	5	GB/T 95-2002 5
44	CASING PIPE 2	1	φ25*φ20.05*41.1
45	FIXING NUT 2	1	φ28*M20*1

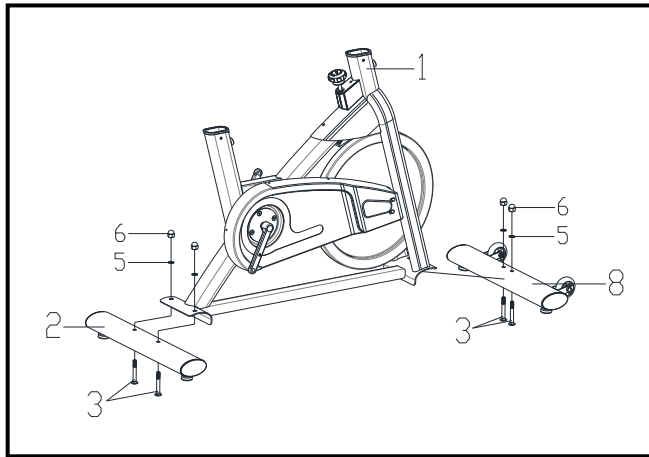
NO.	NAME	QUANTITY	SPEC.
46	CRANK COVER	1	φ56*28
47	DECORATIVE COVER 1	1	225.2*120*176.1
48	DECORATIVE COVER 2	1	170.4*115*109.9
49	BRAKE KNOB	1	M10*185
50	PLASTIC SLEEVE 2	1	φ21.1*φ18*φ10.2*27.5
51	FLAT WASHER 3	1	Φ16xΦ10.2/t1.5
52	SPRING 1	1	δ1.8X40
53	SQUARE NUT	1	16*16*δ8 (M10)
54	SPRING 2	1	φ1.0X55
55	FLAT WASHER 4	1	Φ14*Φ6/t2.5
56	DOMED NUT 2	1	GB/T 802-1988 M6
57	ADJUSTING METAL	1	δ1.0
58	BRAKE BLOCK	1	200*47*30
59	SPRING 3	1	φ2.2
60	PLASTIC SHEET 2	1	32*23*2
61	PLASTIC PLUG 2	1	14*9*14
62	WOOLLY BLOCK	1	113*25*5
63	BOLT 3	2	GB/T 5780-2000 M5*30
64	LOCK NUT 2	2	GB/T 889.1-2000 M5
65	BOLT 4	2	GB/T 5780-2000 M5*10
66	ELASTIC WASHER 2	2	GB/T 859-1987 5
67	FIXING NUT 3	2	M12X1.25
68	BOLT 5	2	M6*50/φ12.5
69	HEXAGON NUT	2	GB/T 41-2000 M6
70	FLAT WASHER 5	2	GB/T 95-2002 12
71	FIXING NUT 4	2	M12X1.25 H=7
72	BEARING 3	2	6001ZZ
73	FLYWHEEL SPINDLE	1	φ12*155
74	CASING PIPE 3	1	φ16*φ12.1*36
75	FLYWHEEL	1	22KG
76	DECORATIVE COVER 3	1	φ59*35
77	SENSOR	1	SR-212
78	SENSOR HOLDER	1	LTF8163
79	MAGNET	1	c-02Z
80	PULSE SENSOR	2	match Φ25 tube
81	PULSE SENSING LINE	1	L=700
82	PLASTIC PLUG	1	PP
83	PLASTIC SLEEVE 3	2	PP

ASSEMBLY INSTRUCTION:

1. PREPARATION:

- A. Before assembling make sure that you will have enough clear space around the bike.
- B. Use the tools provided for assembling.
- C. Before assembling please check whether all the necessary parts are available.

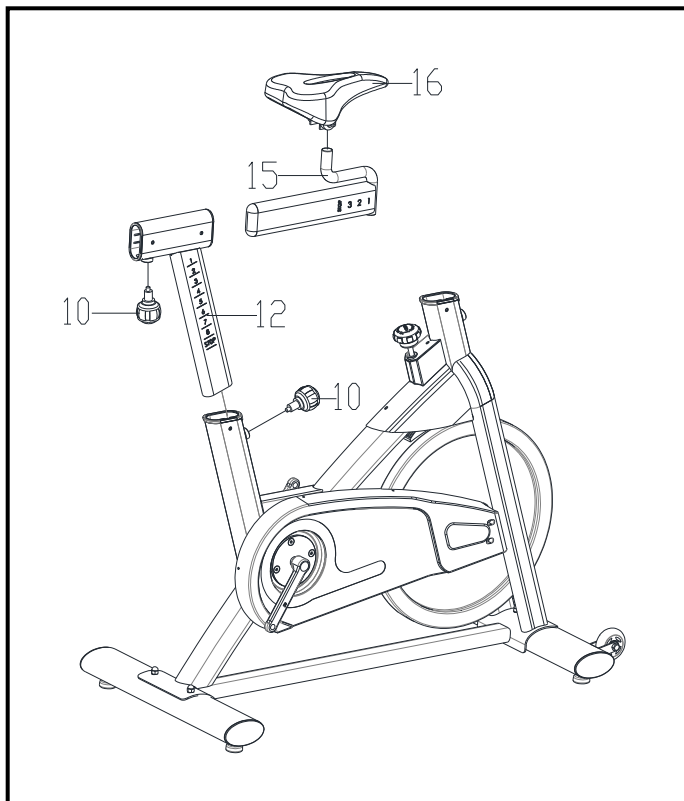
2. ASSEMBLY INSTRUCTION:



Step 1:

Attach the Front Stabilizer (8) to the Main Frame (1) with two sets of Arc Washer (5), M8 Domed Nut (6) and M8*67 Carriage Bolt (3).

Attach the Rear Stabilizer (2) to the Main Frame (1) with two sets of Arc Washer (5), M8 Domed Nut (6) and M8*67 Carriage Bolt (3).



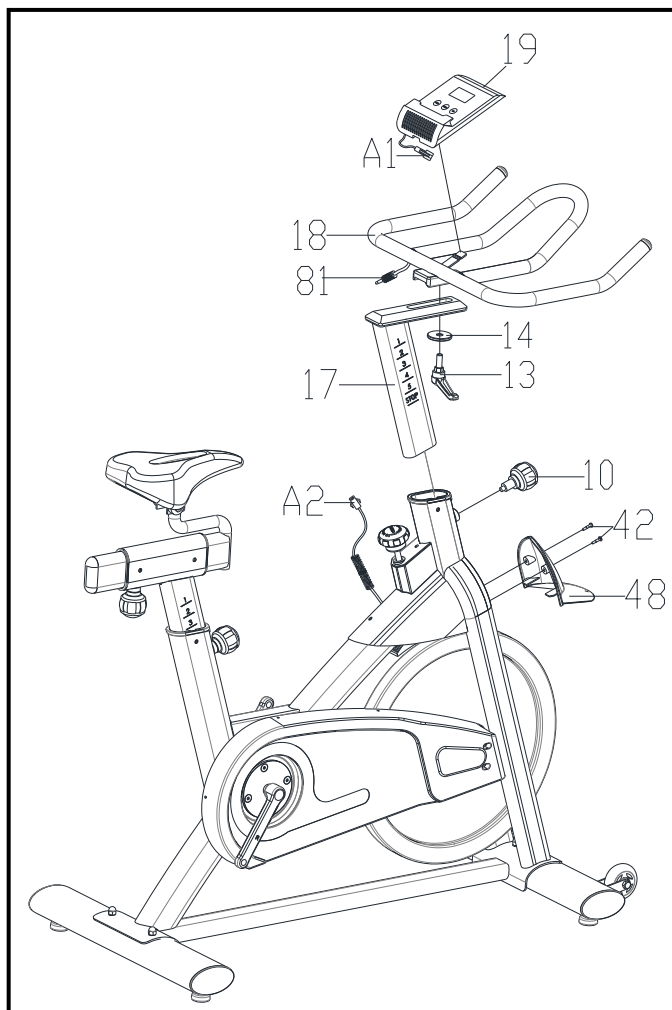
Step 2:

Insert the Vertical Seat Post (12) into the seat post tube of the Main Frame (1).

You will have to slacken the Knob (10) and pull the knob back. Then select the desired height. Release the knob (10) and retighten the knob (10).

Insert the Seat Post (15) into the Vertical Seat Post (12) and lock the Seat Post (15) with the Knob (10).

Attach the Seat (16) onto the Seat Post (15) with the nuts of the seat (already in place)

**Step 3:**

Insert the Handlebar Post (17) into the handlebar post tube of the main frame (1).

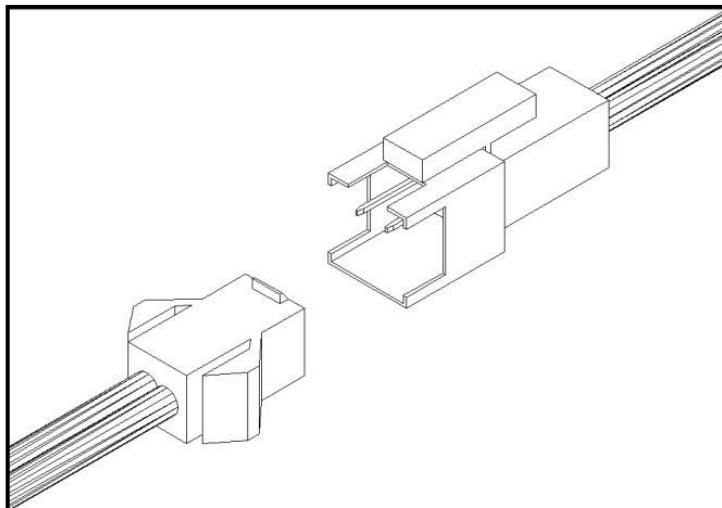
You will have to slacken the Knob (10) and pull the knob back. Then select the desired height. Release the knob (10) and retighten the knob (10).

Attach the Handlebar (18) onto the Handlebar Post (17) with the Knob (13) and the Flat Washer (14).

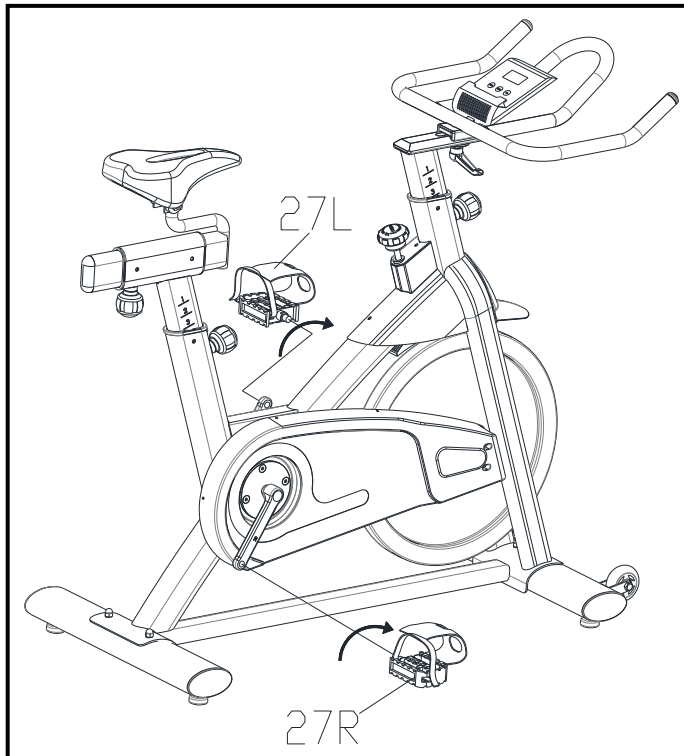
Insert Computer (19) into the computer holder on the Handlebar (18).

The Decorative Cover (48) is fixed on the main frame (1) with two Screws (42).

ATTENTION: YOU SHOULD FIX THE HANDLEBAR TIGHTLY

**ATTENTION::**

Connected with the computer line, to **Gap** (A1) corresponding to the **Convex point** (A2) to insert link.



Step 4:

The Pedals (27L & 27R) are marked "L" and "R" - Left and Right.

Connect them to their appropriate crank arms.

The right crank arm is on the right-hand side of the cycle as you sit on it.

CAUTION: be sure the right pedal (27R) marked (R) is attached to the right crank arm and tightened in the clockwise direction.

The left pedal (27L) marked (L) is attached to the left crank arm and is tightened in an anti-clockwise direction.

IMPORTANT PEDAL ASSEMBLY INSTRUCTIONS:

It is very important you assemble the Left / Right Pedals to the correct side of this Bike.

They are not interchangeable.

****Please note - the left and right pedals are marked with L & R as per images below****

Left Pedal Assembly:

The Left Pedal has a left-hand thread and is to be tightened in an anti-clockwise direction when standing on the left side of the bike. Please make sure the pedal is as tight as possible otherwise the pedal can make a knocking sound.

Right Pedal Assembly:

The Right Pedal has a right-hand thread and is to be tightened in a clockwise direction when standing on the right side of the bike. Please make sure the pedal is as tight as possible otherwise the pedal can make a knocking sound.



Left Pedal marked L – Right Pedal marked R



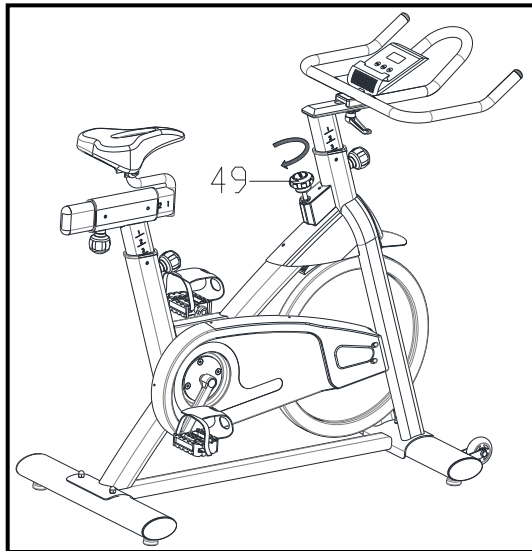
PLEASE NOTE:

THERE IS TWO MOVING WHEELS ON THE FRONT STABILIZER (8) FOR RELOCATING YOUR BIKE.

BOTH THE REAR STABILIZER (2) AND FRONT STABILIZER (8) HAS ADJUSTABLE FEET/STOPPERS FOR UNEVEN FLOORS LOCATED UNDER EACH STABILIZER. SIMPLY TURN EACH ONE ON EACH SIDE TO ADJUST FOR UNEVEN FLOORS.

Assembled! Please double-check each bolt/nut/screw is tight!

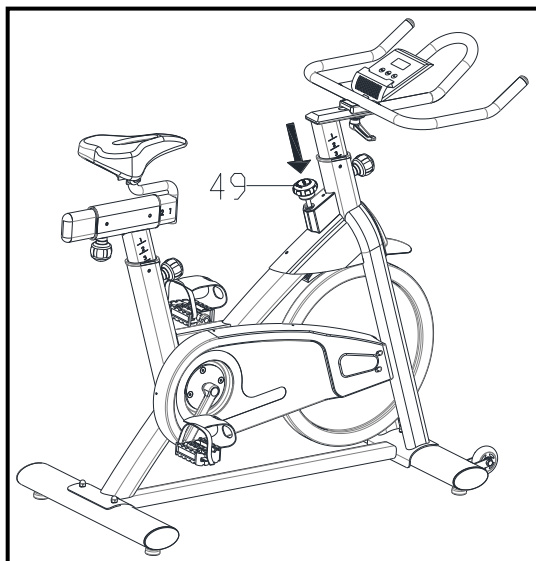
RESISTANCE ADJUSTMENT:



A.) Adjust the resistance:

To increase resistance (requiring more strength to pedal), turn the Emergency Brake & Resistance Control Knob (49) to the right.

To decrease resistance (requiring less strength to pedal), turn the Emergency Brake & Resistance Control Knob (49) to the left.

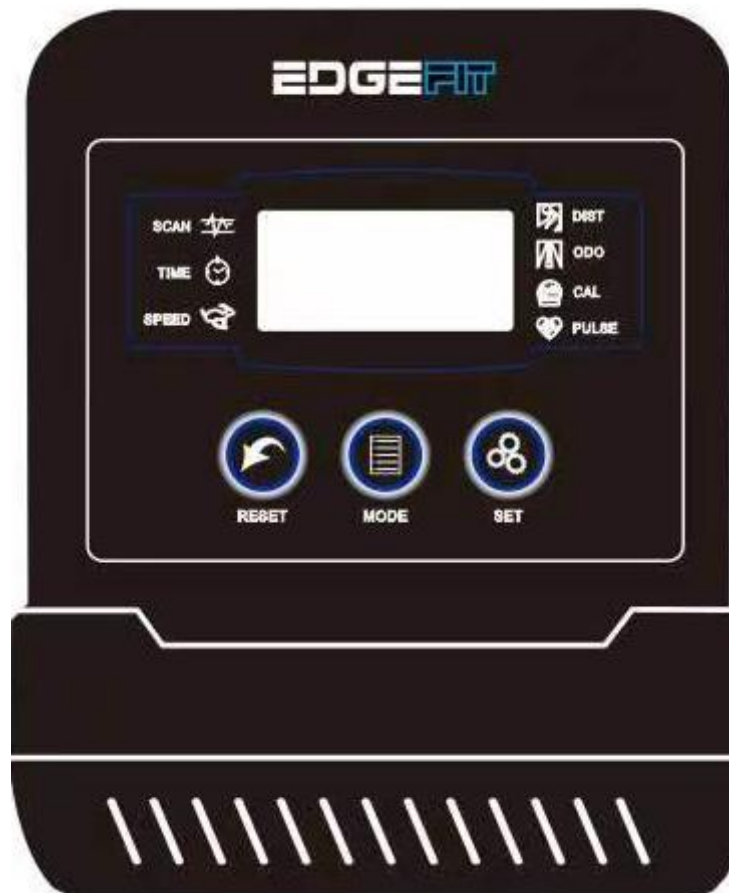


B.) The Emergency Brake Function:

The Emergency Brake & Resistance Control Knob (49) can be used as the Emergency Brake.

When you want the flywheel to stop turning, you must firmly press down the Emergency Brake & Resistance Control Knob (49).

CONSOLE INSTRUCTION:



I. Mode:

This key allows you to select and lock onto a particular function you want to view.

To choose SCAN or LOCK if you do not want the scan mode, press the MODE key when the pointer on the function you want which begins blinking.

II. Auto ON/OFF:

When the batteries (2 x AA) are installed, the computer will beep and show the full display for one second and then go to Standby mode.

TURNS ON: The system turns on when any key is pressed or when it receives an input signal from the speed sensor (when you start to use your new bike)

TURNS OFF: The system turns off automatically when the sensor has no input signal from the speed sensor, or no keys are pressed for approx. 3minutes.

III. RESET:

The unit can be reset by either changing the battery or pressing the 'Reset' key for 3 seconds.

IV. Button function:

Order of appearance when MODE button is pressed: TIME-SPEED-DISTANCE-ODOMETER-CALORIE-PULSE

TIME	Press the MODE key until the pointer locks on to TIME. The total working time will be shown when starting exercise.
SPEED	Press the MODE key until the pointer locks on to SPEED. Displays current speed during workout time.
DISTANCE	Press the MODE key until the pointer locks on to DISTANCE. The distance of each workout will be displayed when starting exercise.
ODOMETER	Press the MODE key until the pointer advances to ODO METER. The total accumulated distance will be shown.
CALORIE	Press the MODE key until the pointer locks onto CALORIE. The calorie burned will be displayed when starting exercise.
PULSE	Press the MODE key until the pointer advances to PULSE function and take hold of the hand sensors about 3 seconds for function to register.
SCAN	Display changes according to the next diagram every 4 seconds.

NOTE:

1. Without any signal coming in 3 minutes, the LCD display will be shut off automatically.
2. If there is a possibility of seeing an improper display on the monitor, please replace the batteries to have a good result. You must replace all the batteries at the same time.
3. The monitor uses 1.5V "AA" or "AAA" batteries.

APP User Instructions:

<u>1、 FitShow Download</u>	1
<u>2、 Application Operation</u>	2
<u>2.1、 User register/signup and login</u>	2
<u>2.2、 Device Connection</u>	3
<u>2.3、 Model Selection</u>	4
<u>2.4、 Sports Control</u>	5
<u>2.5、 Sports Training</u>	6
<u>2.6、 Outdoor Sports</u>	7
<u>2.7、 Discover</u>	8
<u>2.8、 My</u>	9
<u>3、 The Third-Party Application</u>	10
<u>3.1、 Kinomap</u>	10
<u>3.2、 ZWIFT</u>	11
<u>3.3、 SPAX</u>	12

1.FitShow / Kinomap / ZWIFT Download



FitSHOW



 **Kinomap**

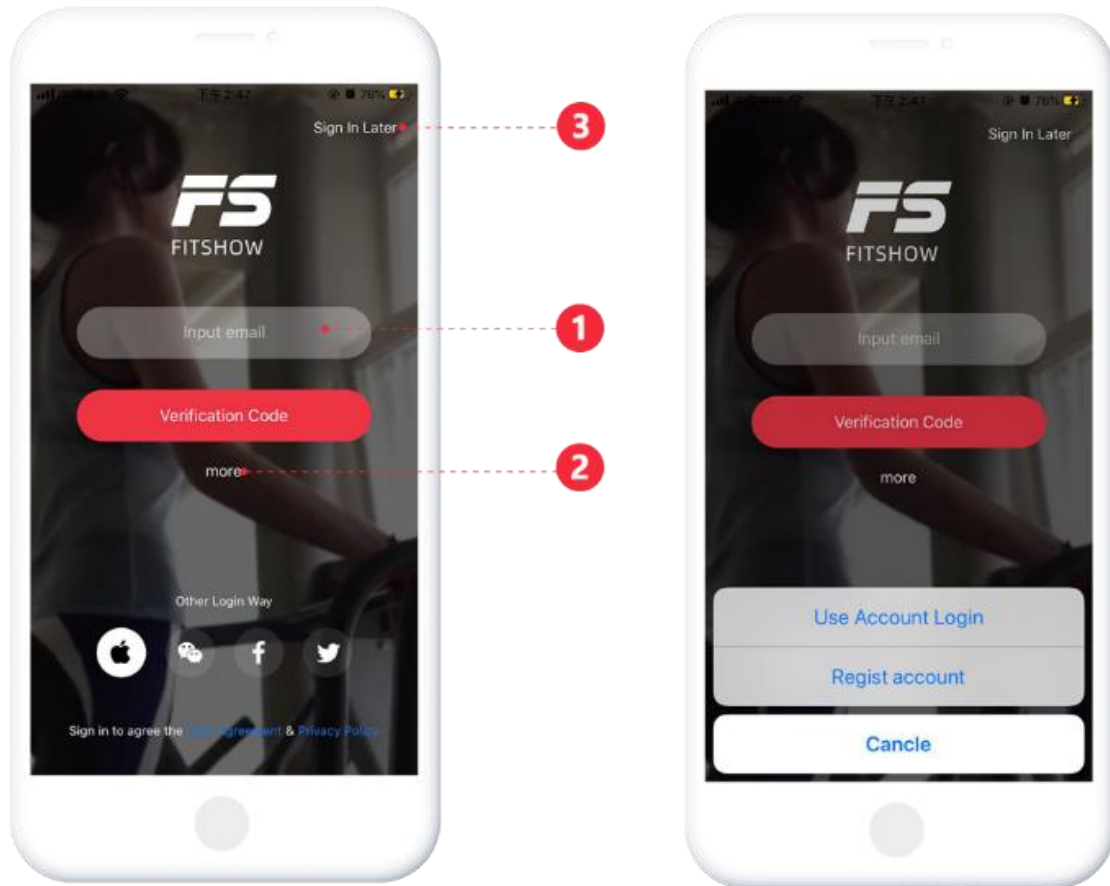


 **ZWIFT**

Scan the QR code to download the APP directly or download and install over the application stores by searching 'Fitshow / Kinomap / ZWIFT'.

2. Application Operation

2.1 FitSHOW User register/signup and login

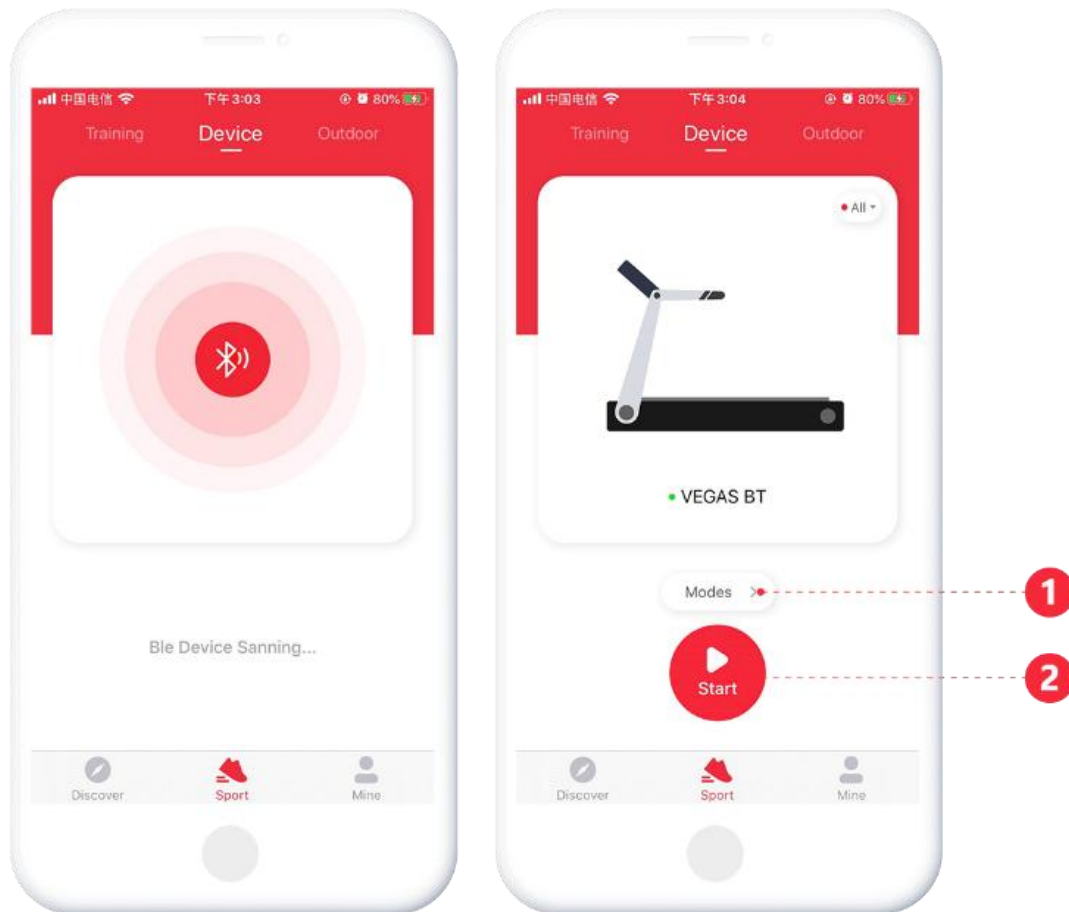


【1】: Generate a verification code to log in directly

【2】: Tap 'More' -> Password Login to input the existing account and password

【3】: Log in as a guest

2.2 FitSHOW Device Connection

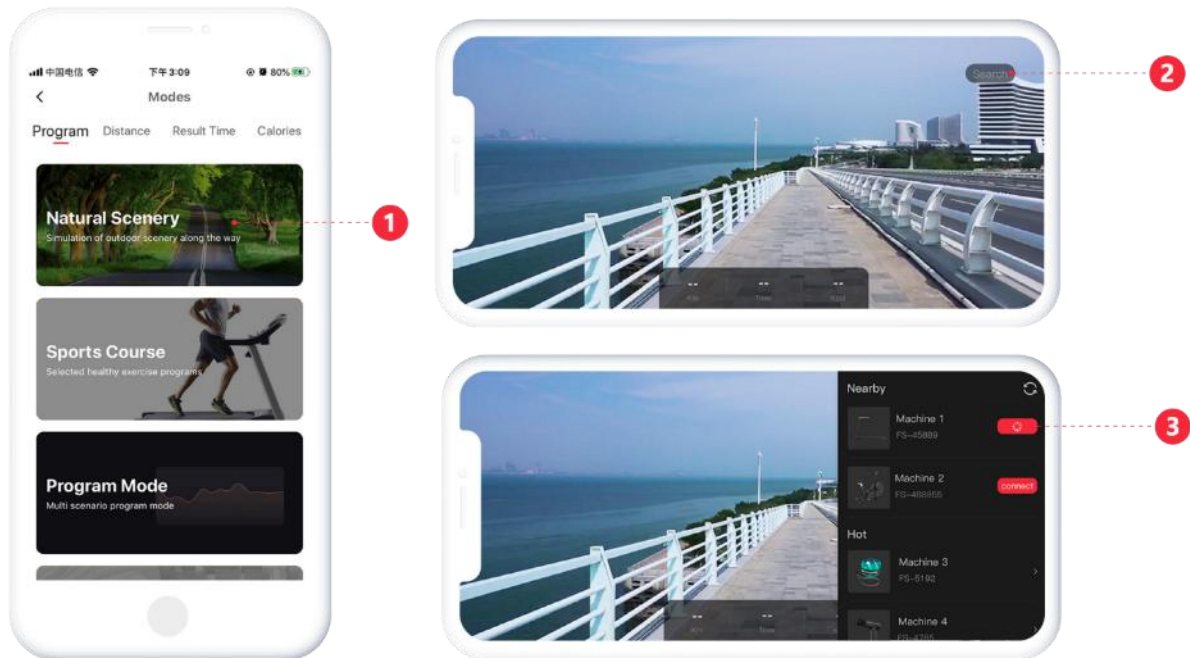


Before connecting the device, please make sure the system Bluetooth and GPS (Andoird8.0 and above required) are ON status. Then go to [Sports - Devices] page, get the devices nearby via Bluetooth search.

Note:

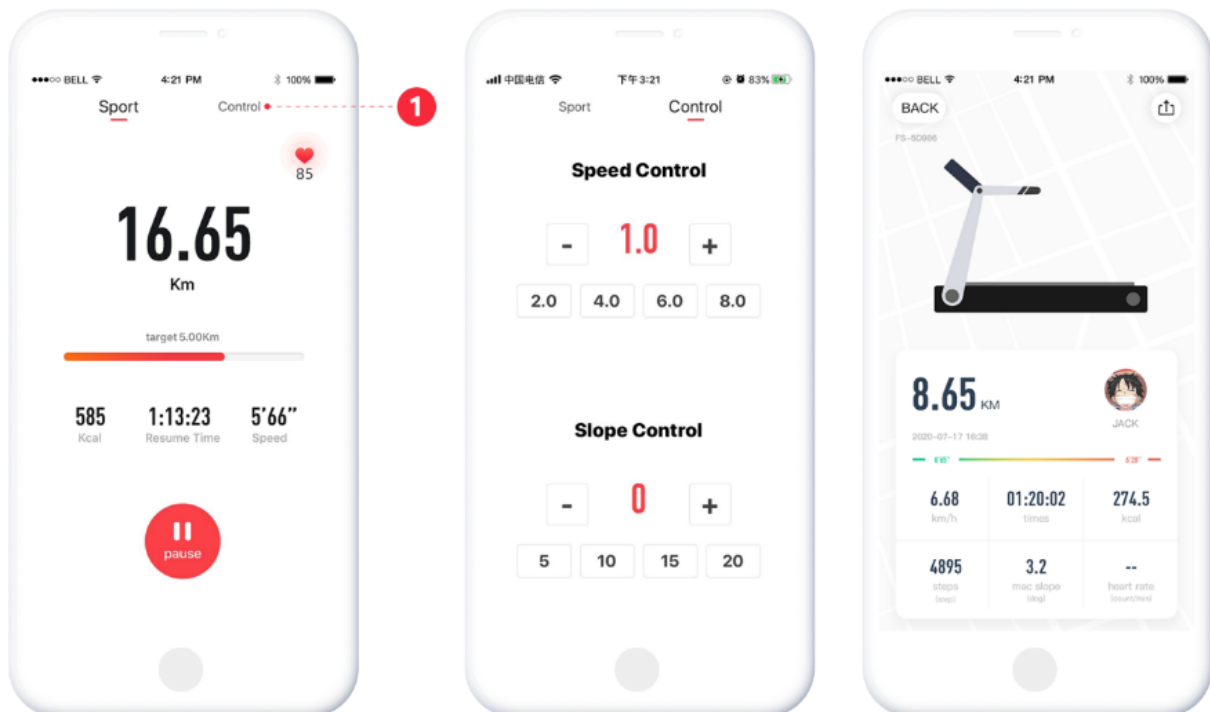
1. Please do not bind devices by the phone Bluetooth list which will disable the APP.
2. If the device is powered by battery, please run the device one or two to activate the device then connect APP.

2.3 FitSHOW Model Selection



Tap a model **【1】** to enter the corresponding sports model, then connect the desired device by the nearby devices list **【2】**.

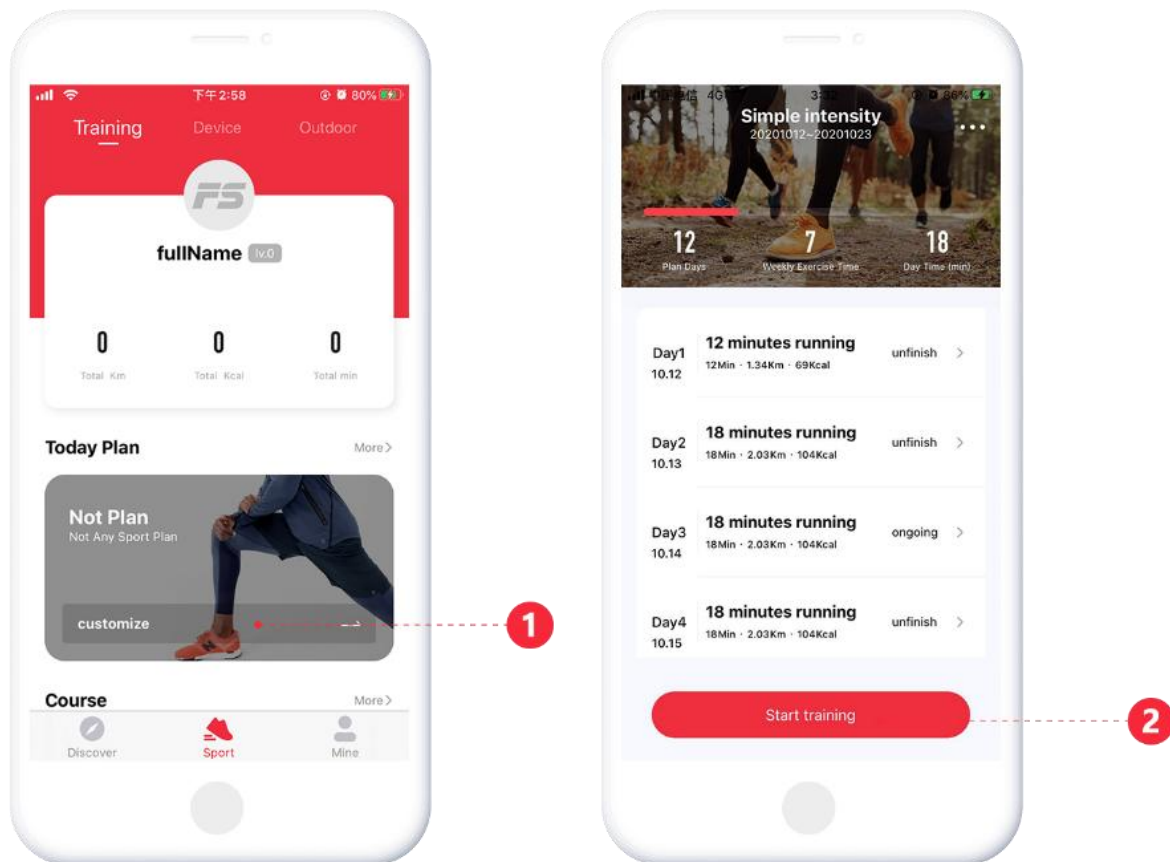
2.4 FitSHOW Sports Control



Start the Treadmill to enter the sports car table and control the sports by the **[1]** control options.

The motion data is generated synchronously after the sports.

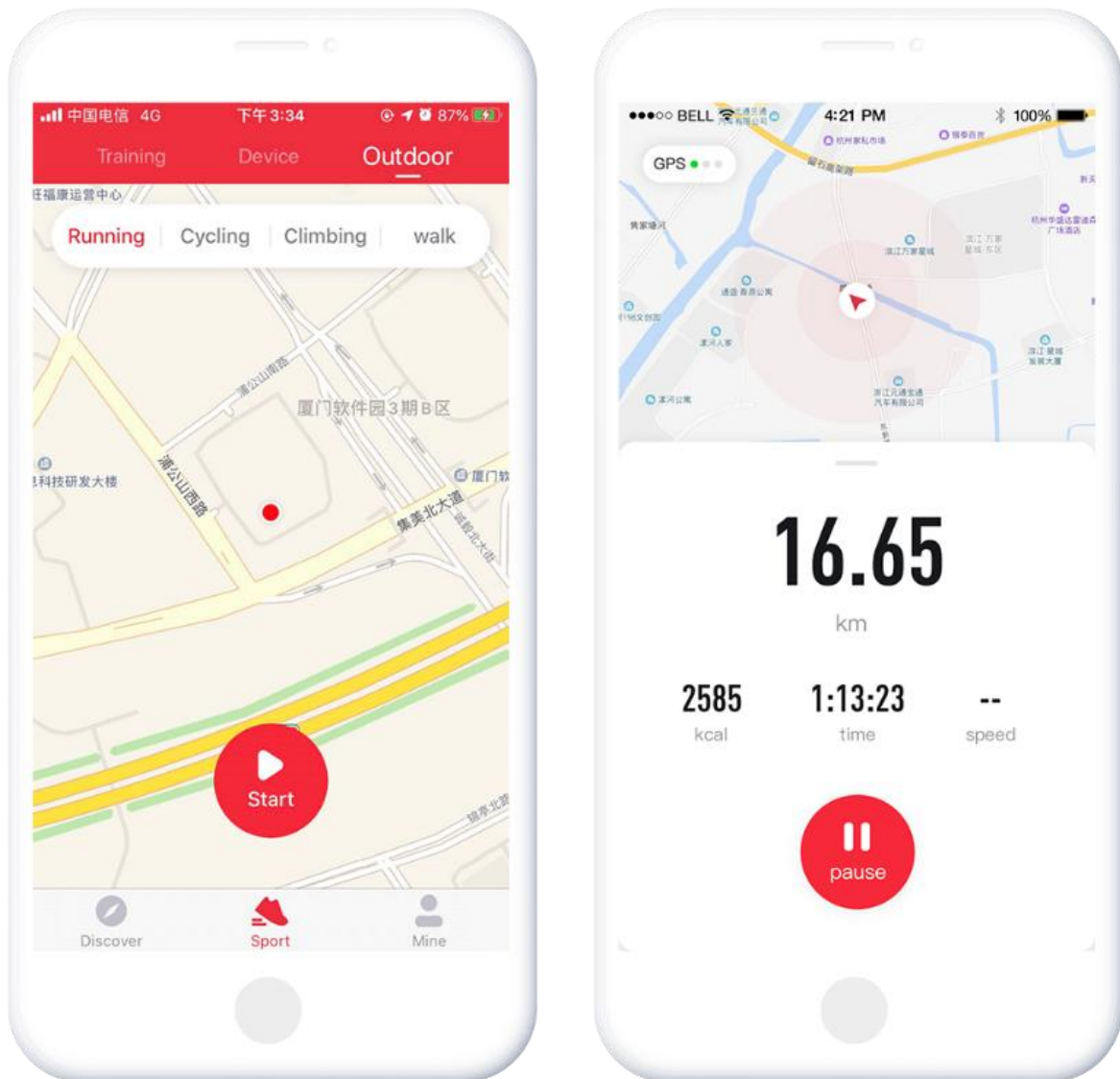
2.5 FitSHOW Sports Training



Enter [Sports - Training] page, make a daily sport plan by the **【1】** .

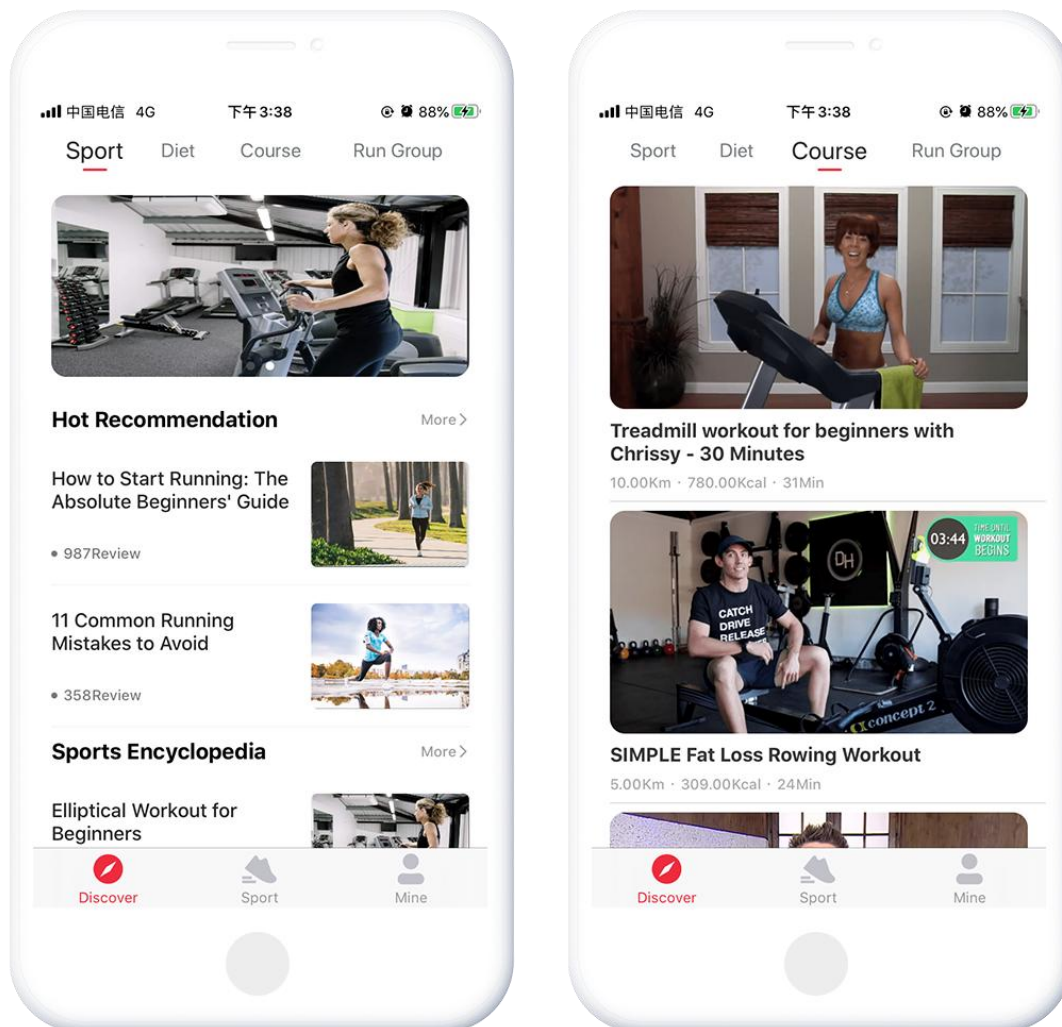
Once the plan is created, tap **【2】** to start the plan.

2.6 FitSHOW Outdoor Sports



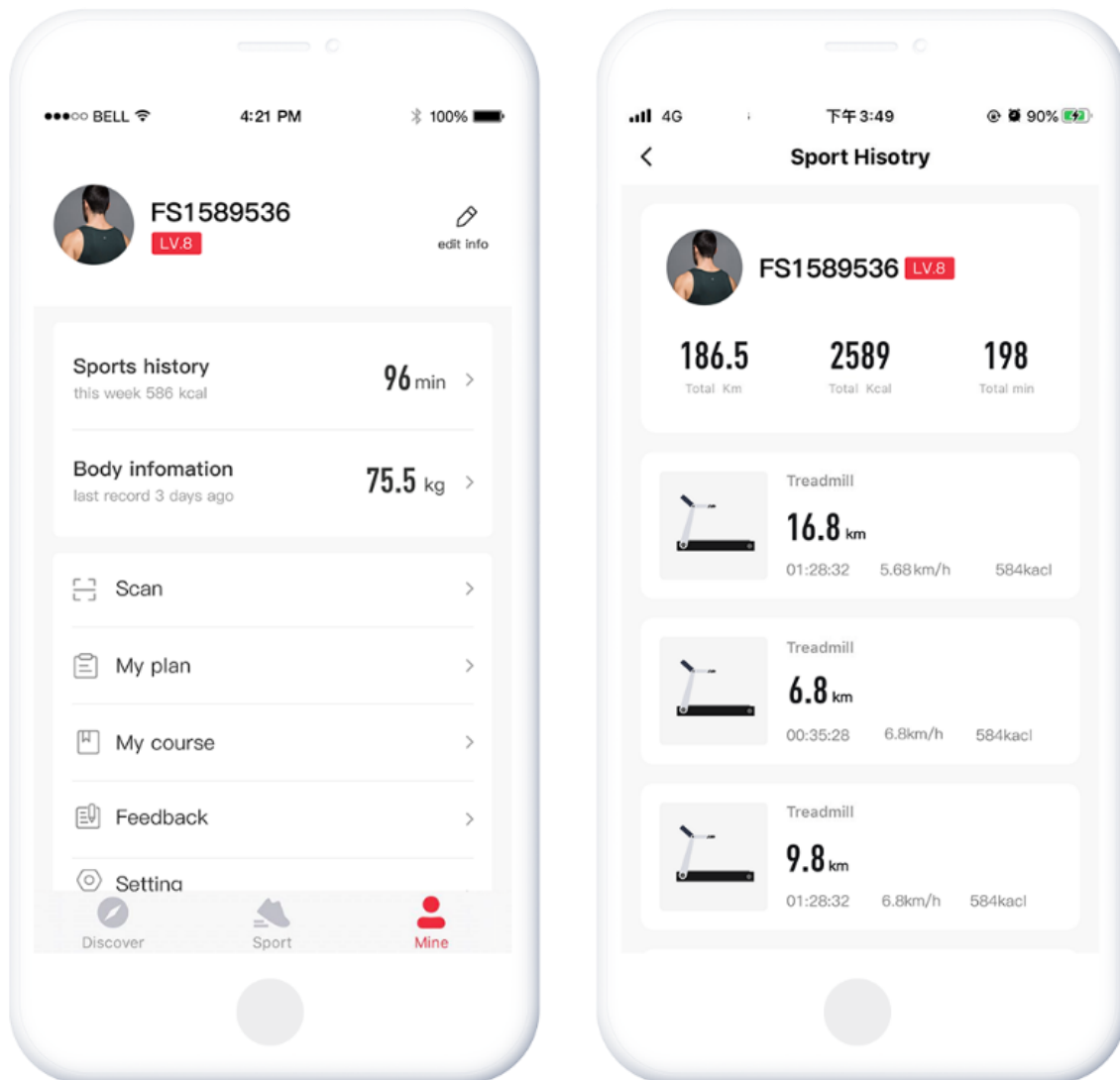
Enter [Sports - Outdoor] page to start a related outdoor sports model.

2.7 FitSHOW Discover



Enter [Discover] page to find more sports, diet, course, and other wonderful content recommendations.

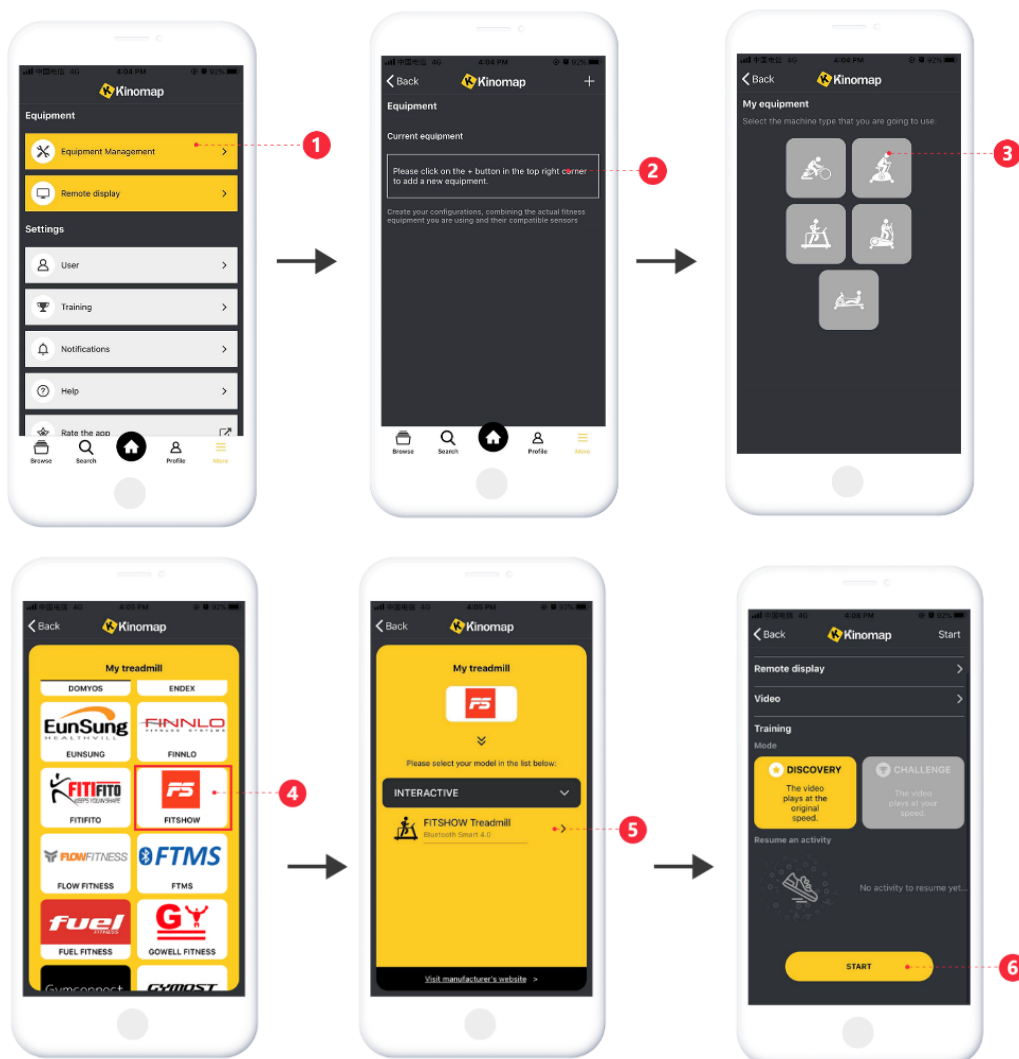
2.8 FitSHOW My



Enter [Mine] page to view the sports data record, edit profile, change system setting, and so on.

3. The Third-Party Application

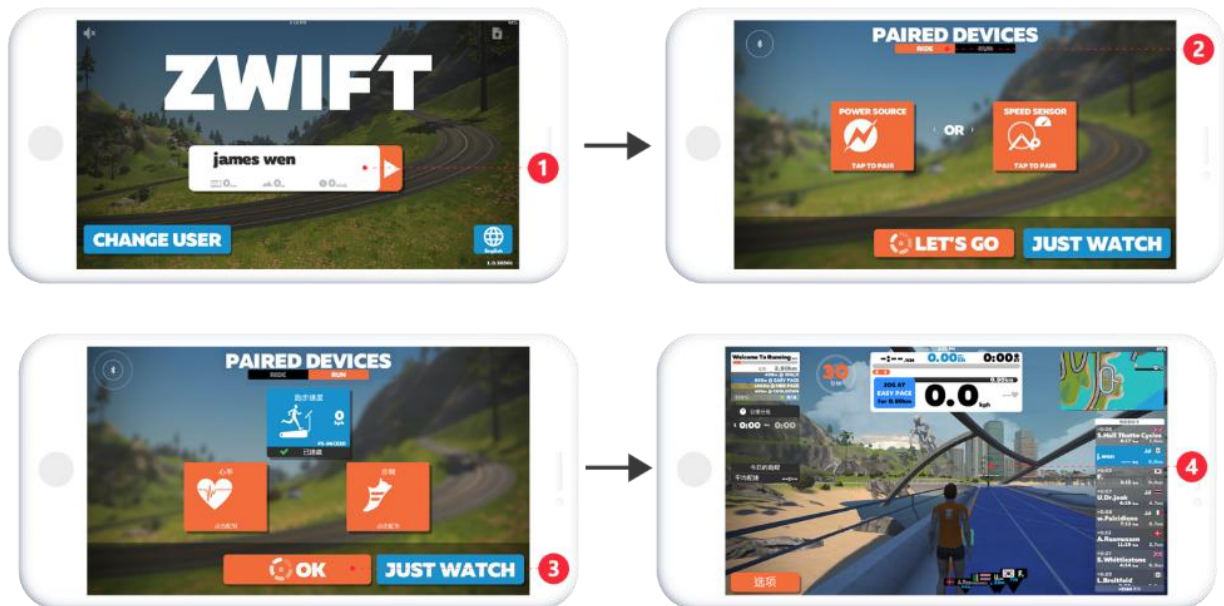
3.1 Kinomap



Search, download, and install Kinomap over the App Store.

- [1]** Enter Kinomap to select [More] page;
- [2]** Select to add more fitness equipment;
- [3]** Select the desired device type;
- [4]** Tap FitShow entrance;
- [5]** Tap the matching devices like 'Fs-XXXX' to bind;
- [6]** Find related videos to start sports.

3.2 ZWIFT



Search, download, and install ZWIFT over the App Store.

- 【1】** Enter ZWIFT to register an account;
- 【2】** Login account to select the paired riding or running equipment;
- 【3】** Pair device successfully, tap OK to start sport;
- 【4】** For riding equipment, start riding directly. For running equipment, need to press the start button to start running.

CUSTOMER SUPPORT:

Should you require any customer support, warranty requests or spare parts, please provide the following information via email to support@edgefit.com.au or 0494 022 729.

- Serial number – this can be found on the rear foot stabilizer as per image below.
- The original proof of purchase from one of our retail partners.
- Description of the issue or spare part # required from the exploded diagram on page 3, 4, 5.

It's very important to retain your proof of purchase receipt as the warranty is only applicable to the original purchaser of this product. The warranty starts from the date shown on the original receipt of purchase from one of our retail partners.

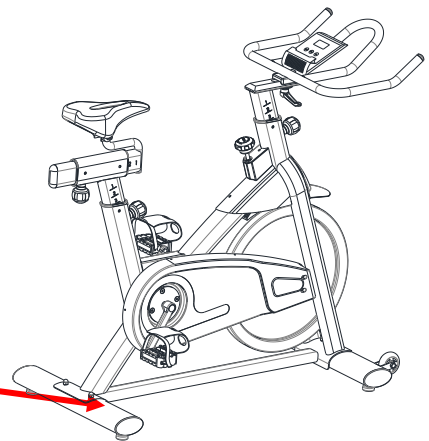
EDGEFIT warranty covers manufacturing faults.

STUDIOPro WARRANTY:

7 years Frame

2 Years Parts

2 Years Electronics



Serial Number is located here.



Proudly designed and developed by:

Total Import Solutions PTY LTD
PO Box 92 Bargo, NSW, Australia.
ABN 17 633 635 702

EDGEFIT